



INFORMATION

Blowers

Environmental Equipment

Fans & Blowers

Dust Collectors

E-SERIES EC/EM/EP type

ISO9001 Certification Acquisition



EC-63~
EC-125



EM-100T7
EM-125M2



EP-63~
EP-125

| Impeller | Model | Casing discharge in. diam. (mm) | Discharge flange out. diam. (mm) | Phase | Output (kW) | ※Current (A) | | | | 50Hz | | | 60Hz | | | Weight (kg) | |
|-------------|----------|---------------------------------|----------------------------------|-------|-------------|--------------|------|---------|----------|------|----------------------------------|-------------------------------------|----------------------------|----------------------------------|-------------------------------------|-------------|----------------------------|
| | | | | | | 100V | | 200V | 200/220V | | Revolutions (min ⁻¹) | Max. air flow (m ³ /min) | Max. static pressure (kPa) | Revolutions (min ⁻¹) | Max. air flow (m ³ /min) | | Max. static pressure (kPa) |
| | | | | | | 50Hz | 60Hz | 50Hz | 60Hz | | | | | | | | |
| Turbo fan | EC-63S | 63 | 63 | 1 | 0.1 | 1.4 | 1.7 | — | — | 2800 | 4.5 | 0.60 | 3400 | 5.5 | 0.85 | 6.5 | |
| | EC-63T | 63 | 63 | 3 | | — | — | 0.8 | 0.8 | | | | | | | | |
| | EC-75S | 75 | 75 | 1 | 0.2 | 3.5 | 3.5 | — | — | 2800 | 6.5 | 0.80 | 3400 | 7.5 | 1.15 | 8.3 | |
| | EC-75T | 75 | 75 | 3 | | — | — | 1.2 | 1.1 | | | | | | | | |
| | EC-100S | 100 | 97 | 1 | 0.4 | 6.0 | 7.8 | — | — | 2850 | 13 | 1.32 | 3450 | 16 | 1.91 | 13.8 | |
| | EC-100T | 100 | 97 | 3 | | — | — | 2.5 | 2.5/2.4 | | | | | | | | |
| EC-125 | 125 | 123 | 3 | 1.0 | — | — | 4.5 | 4.5/4.2 | 2850 | 24 | 1.70 | 3450 | 28 | 2.50 | 21 | | |
| Sirocco fan | EM-100T7 | 100 | 97 | 3 | 0.75 | — | — | 3.5 | 3.5/3.2 | 2850 | 16 | 1.28 | 3450 | 16 (19) | 1.81 | 16 | |
| | EM-125M2 | 125 | 123 | 3 | 2.2 | — | — | 9.5 | 9.2/8.4 | 2850 | 33 | 1.67 | 3450 | 32 (37) | 2.50 | 25 | |
| Plate fan | EP-63S | 63 | 63 | 1 | 0.1 | 1.4 | 1.7 | — | — | 2800 | 5.0 | 0.60 | 3400 | 6.0 | 0.85 | 6.5 | |
| | EP-63T | 63 | 63 | 3 | | — | — | 0.8 | 0.8 | | | | | | | | |
| | EP-75S | 75 | 75 | 1 | 0.2 | 3.5 | 3.5 | — | — | 2800 | 7.0 | 0.80 | 3400 | 8.0 | 1.15 | 9 | |
| | EP-75T | 75 | 75 | 3 | | — | — | 1.2 | 1.1 | | | | | | | | |
| | EP-100S | 100 | 97 | 1 | 0.4 | 6.0 | 7.8 | — | — | 2850 | 13.5 | 1.18 | 3450 | 16 | 1.67 | 13 | |
| | EP-100T | 100 | 97 | 3 | | — | — | 2.5 | 2.5/2.4 | | | | | | | | |
| EP-125 | 125 | 123 | 3 | 1.0 | — | — | 4.5 | 4.5/4.2 | 2850 | 23 | 1.50 | 3450 | 24 (27) | 2.15 | 20 | | |

※The desired voltage can be specified when ordering. ※Current values will change according to the voltage.

GENERAL PURPOSE-SERIES SF/SB type

ISO9001 Certification Acquisition



SF-50



SF-38HT



SB-201
SB-202

| Model | Casing discharge in. diam. (mm) | Discharge flange out. diam. (mm) | Phase | Output (kW) | ※Current (A) | | | | 50Hz | | | 60Hz | | | Weight (kg) | |
|--------|---------------------------------|----------------------------------|-------|-------------|--------------|------|------|----------|------|----------------------------------|-------------------------------------|----------------------------|----------------------------------|-------------------------------------|-------------|----------------------------|
| | | | | | 100V | | 200V | 200/220V | | Revolutions (min ⁻¹) | Max. air flow (m ³ /min) | Max. static pressure (kPa) | Revolutions (min ⁻¹) | Max. air flow (m ³ /min) | | Max. static pressure (kPa) |
| | | | | | 50Hz | 60Hz | 50Hz | 60Hz | | | | | | | | |
| SF-38 | 38 | 41 | 1 | 0.025 | 1.0 | 1.0 | — | — | 2830 | 1.1 | 0.21 | 3280 | 1.2 | 0.31 | 2 | |
| SF-50 | 50 | 49 | 1 | 0.04 | 0.8 | 0.8 | — | — | 2700 | 2.2 | 0.32 | 3200 | 2.6 | 0.45 | 2.9 | |
| SF-55S | 55 | 49 | 1 | 0.04 | 0.8 | 1.0 | — | — | 2700 | 2.5 | 0.31 | 3200 | 2.8 | 0.44 | 3 | |
| SB-151 | 38 | 41 | 1 | 0.04 | 0.7 | 0.7 | — | — | 2700 | 1.6 | 0.47 | 3200 | 2.0 | 0.66 | 3 | |
| SB-201 | 50 | 49 | 1 | 0.04 | 0.7 | 0.7 | — | — | 2700 | 2.2 | 0.47 | 3200 | 2.6 | 0.66 | 3 | |
| SB-202 | 50 | 49 | 3 | 0.04 | — | — | 0.3 | 0.3 | 2700 | 2.2 | 0.47 | 3200 | 2.6 | 0.66 | 3 | |

※The desired voltage can be specified when ordering. ※Current values will change according to the voltage.

GENERAL PURPOSE-SERIES SF/SB type

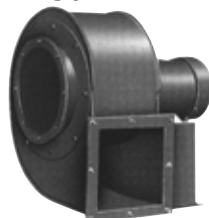
ISO9001 Certification Acquisition



SF-100
SB-100



SB-150



SB-180



SB-600

| Impeller | Model | Casing discharge in. diam. (mm) | Discharge flange out. diam. (mm) | Intake flange out. diam. (mm) | Phase | Output (kW) | ※Current (A) | | | | 50Hz | | | 60Hz | | | Weight (kg) | |
|-----------------|----------|---------------------------------|----------------------------------|-------------------------------|-------|-------------|--------------|------|------|----------|------|----------------------------------|-------------------------------------|----------------------------|----------------------------------|-------------------------------------|-------------|----------------------------|
| | | | | | | | 100V | | 200V | 200/220V | | Revolutions (min ⁻¹) | Max. air flow (m ³ /min) | Max. static pressure (kPa) | Revolutions (min ⁻¹) | Max. air flow (m ³ /min) | | Max. static pressure (kPa) |
| | | | | | | | 50Hz | 60Hz | 50Hz | 60Hz | | | | | | | | |
| Sirocco fan | SF-75 | 75 | 75 | — | 1 | 0.25 | 4.5 | 4.5 | — | — | 2800 | 8.0 | 0.55 | 3400 | 9.5 | 0.80 | 8 | |
| | SB-75 | | | | | | — | — | 1.4 | 1.3 | | | | | | | | |
| | SF-100 | 100 | 97 | — | 1 | 0.4 | 6.0 | 7.8 | — | — | 2850 | 13 | 0.71 | 3450 | 15 | 1.03 | 11.5 | |
| | SB-100 | | | | | | — | — | 2.5 | 2.5/2.4 | | | | | | | | |
| | SB-150 | 142×142 | 150×150 | — | 3 | 0.75 | — | — | 3.5 | 3.5/3.2 | 2850 | 21 | 0.90 | 3450 | 20 (25) | 1.30 | 18 | |
| | SB-180 | 194×194 | — | — | 3 | 1.5 | — | — | 6.5 | 6.0 | 1430 | 45 | 0.54 | 1715 | 53 | 0.79 | 50 | |
| Turbo-Plate fan | SB-600 | 150 | 148 | 148 | 3 | 0.75 | — | — | 3.5 | 3.5/3.2 | 2850 | 23 | 1.45 | 3450 | 27 | 2.05 | 22 | |
| | SB-600P | 150 | 148 | 148 | 3 | 0.75 | — | — | 3.5 | 3.5/3.2 | 2850 | 25 | 1.25 | 3450 | 20 (29) | 1.75 | 22 | |
| | SBT-600 | 150 | 148 | 148 | 3 | 1.5 | — | — | 6.2 | 6.2/5.7 | 2850 | 30 | 1.96 | 3450 | 36 | 2.84 | 31 | |
| | SBT-600P | 150 | 148 | 148 | 3 | 1.5 | — | — | 6.2 | 6.2/5.7 | 2850 | 29 | 1.77 | 3450 | 30 (34) | 2.45 | 30 | |

※The desired voltage can be specified when ordering. ※Current values will change according to the voltage.

Max. air flow beyond motor capacity given in ().

KSB-SERIES KSB-B/KSB type

ISO9001 Certification Acquisition



| Model | Casing discharge in. diam. (mm) | Discharge flange out. diam. (mm) | Intake flange out. diam. (mm) | Phase | Output (kW) | *Current (A) | | Revolutions (min ⁻¹) | | Max. air flow (m ³ /min) | Max. static pressure (kPa) | Weight (kg) |
|----------|---------------------------------|----------------------------------|-------------------------------|-------|-------------|--------------|------------|----------------------------------|------|-------------------------------------|----------------------------|-------------|
| | | | | | | 200V | 200/220V | 50Hz | 60Hz | | | |
| | | | | | | 50Hz | 60Hz | 50Hz | 60Hz | | | |
| KSB-400 | 75 | 82 | 123 | 3 | 0.4 | 2.5 | 2.5/2.4 | 2850 | 3450 | 12 | 2.10 | 22 |
| KSB-750 | 114 | 123 | 175 | 3 | 0.75 | 3.5 | 3.5/3.2 | 2850 | 3450 | 23 | 2.30 | 25 |
| KSB-1500 | 125 | 123 | 175 | 3 | 1.5 | 6.2 | 6.2/5.7 | 2850 | 3450 | 35 | 2.75 | 39 |
| KSB-2200 | 135 | 148 | 175 | 3 | 2.2 | 9.5 | 9.2/8.4 | 2850 | 3450 | 42 | 3.35 | 45 |
| KSB-3700 | 160 | 175 | 200 | 3 | 3.7 | 15.0 | 14.5/13.5 | 2850 | 3450 | 65 | 4.41 | 70 |
| KSB-5500 | JIS 5K 200A | | JIS 5K 200A | 3 | 5.5 | *20.0 | *20.0/18.4 | 2920 | 3510 | 79 | 5.20 | 165 |
| KSB-7500 | JIS 5K 200A | | JIS 5K 250A | 3 | 7.5 | *26.0 | *26.0/24.2 | 2920 | 3510 | 90 | 5.59 | 180 |

*The desired voltage can be specified when ordering. *Current values will change according to the voltage. *) Marked specifications will vary according to motor used.

| Model | Casing discharge in. diam. (mm) | Discharge flange out. diam. (mm) | Intake flange out. diam. (mm) | Phase | Output (kW) | *Current (A) | | *50Hz 200V | | | *60Hz 200/220V | | | Weight (kg) |
|-----------|---------------------------------|----------------------------------|-------------------------------|-------|-------------|--------------|-----------|----------------------------------|-------------------------------------|----------------------------|----------------------------------|-------------------------------------|----------------------------|-------------|
| | | | | | | 200V | 200/220V | Revolutions (min ⁻¹) | Max. air flow (m ³ /min) | Max. static pressure (kPa) | Revolutions (min ⁻¹) | Max. air flow (m ³ /min) | Max. static pressure (kPa) | |
| | | | | | | 50Hz | 60Hz | | | | | | | |
| KSB-750B | 114 | 123 | 175 | 3 | 0.75 | 3.5 | 3.5/3.2 | 2850 | 15 | 2.10 | 3450 | 18 | 3.00 | 25 |
| KSB-1500B | 125 | 123 | 175 | 3 | 1.5 | 6.2 | 6.2/5.7 | 2850 | 24 | 2.75 | 3450 | 28 | 3.90 | 39 |
| KSB-2200B | 135 | 148 | 175 | 3 | 2.2 | 9.5 | 9.2/8.4 | 2850 | 32 | 3.15 | 3450 | 38 | 4.50 | 45 |
| KSB-3700B | 160 | 175 | 200 | 3 | 3.7 | 15.0 | 14.5/13.5 | 2850 | 45 | 3.78 | 3450 | 52 | 5.40 | 70 |

*The desired voltage can be specified when ordering. *Current values will change according to the voltage.

FLANGED-SERIES FS type

ISO9001 Certification Acquisition

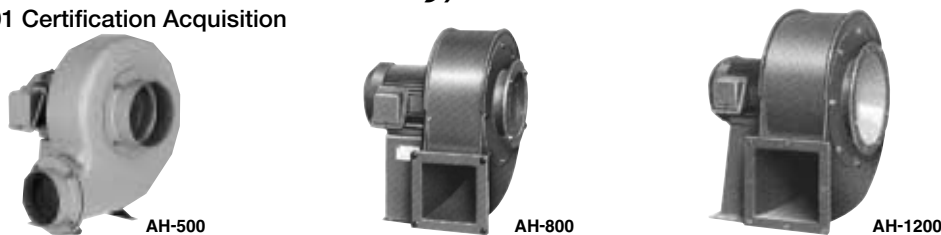


| Model | Casing discharge in. diam. (mm) | Phase | Output (kW) | *Current (A) | | *50Hz 200V | | | *60Hz 200/220V | | | Weight (kg) |
|---------|---------------------------------|-------|-------------|--------------|----------|----------------------------------|-------------------------------------|----------------------------|----------------------------------|-------------------------------------|----------------------------|-------------|
| | | | | 200V | 200/220V | Revolutions (min ⁻¹) | Max. air flow (m ³ /min) | Max. static pressure (kPa) | Revolutions (min ⁻¹) | Max. air flow (m ³ /min) | Max. static pressure (kPa) | |
| | | | | 50Hz | 60Hz | | | | | | | |
| FS-150 | 70×80 | 3 | 0.2 | 1.2 | 1.1 | 2800 | 7.0 | 0.39 | 3400 | 8.0 | 0.55 | 6 |
| | | | | | | | *6.2 | *0.35 | | | *7.0 | |
| FS-200 | 76×76 | 3 | 0.25 | 1.5 | 1.5 | 2800 | 9.5 | 0.55 | 3400 | 11 | 0.75 | 8.5 |
| FS-400 | 102×102 | 3 | 0.4 | 2.5 | 2.5/2.4 | 2850 | 15 | 0.80 | 3450 | 14 (18) | 1.08 | 12 |
| FS-750 | 110×120 | 3 | 0.75 | 3.5 | 3.5/3.2 | 2850 | 21 | 0.85 | 3450 | 19 (26) | 1.25 | 16 |
| FS-1500 | 144×166 | 3 | 1.5 | 6.2 | 6.2/5.7 | 2850 | 32 | 1.13 | 3450 | 37 (39) | 1.62 | 24 |
| FS-2200 | 150×170 | 3 | 2.2 | 9.5 | 9.2/8.4 | 2850 | 45 | 1.43 | 3450 | 43 (53) | 2.06 | 29 |

*The desired voltage can be specified when ordering. *Current values will change according to the voltage. Max. air flow beyond motor capacity given in (). HT specifications and performance marked with *.

LOW NOISE-SERIES AH type

ISO9001 Certification Acquisition



| Model | Casing discharge in. diam. (mm) | Discharge flange out. diam. (mm) | Intake flange out. diam. (mm) | Phase | Output (kW) | *Current (A) | | *50Hz 200V | | | *60Hz 200/220V | | | Weight (kg) |
|---------|---------------------------------|----------------------------------|-------------------------------|-------|-------------|--------------|----------|----------------------------------|-------------------------------------|----------------------------|----------------------------------|-------------------------------------|----------------------------|-------------|
| | | | | | | 200V | 200/220V | Revolutions (min ⁻¹) | Max. air flow (m ³ /min) | Max. static pressure (kPa) | Revolutions (min ⁻¹) | Max. air flow (m ³ /min) | Max. static pressure (kPa) | |
| | | | | | | 50Hz | 60Hz | | | | | | | |
| AH-400 | 100 | 97 | 123 | 3 | 0.2 | 1.2 | 1.1/1.1 | 2800 | 9.5 | 0.75 | 3400 | 11 | 1.05 | 10 |
| AH-500 | 125 | 123 | 148 | 3 | 0.4 | 2.5 | 2.5/2.4 | 2850 | 17 | 1.03 | 3450 | 20 | 1.47 | 17 |
| AH-600 | 144×144 | *144×144 | *170 | 3 | 0.75 | 3.5 | 3.5/3.2 | 2850 | 34 | 1.15 | 3450 | 40 | 1.65 | 26.5 |
| AH-800 | 160×160 | *160×160 | *200 | 3 | 1.0 | 4.5 | 4.5/4.2 | 2850 | 40 | 1.30 | 3450 | 48 | 1.85 | 30 |
| AH-1000 | 180×180 | *180×180 | *250 | 3 | 1.5 | 6.2 | 6.2/5.7 | 2850 | 56 | 1.35 | 3450 | 65 | 1.90 | 47 |
| AH-1200 | 210×210 | *210×210 | *275 | 3 | 2.2 | 9.5 | 9.2/8.4 | 2850 | 73 | 1.65 | 3450 | 85 | 2.35 | 55 |

*The desired voltage can be specified when ordering. *Current values will change according to the voltage.

* Inner diameter given for discharge and intake flange for models AH-600/800/1000/1200.

PRESSURE & EXPLOSION-PROOF-SERIES MD·ME type

ISO9001 Certification Acquisition



MD-EC-100



ME-U75-5



ME-KSB-750

| Model | ※Voltage (V) | Frequency (Hz) | Output (kW) | Max.air flow (m³/min) | Max.static pressure (kPa) | Weight (kg) (HT) | |
|--------------------|---------------|----------------|-------------|-----------------------|---------------------------|------------------|---------|
| | | | | | | MD | ME |
| MD (ME) -EC-63T | 200 · 200/220 | 50/60 | 0.2 | 4.5/5.5 | 0.60/0.85 | 10 (11) | 8 (9) |
| MD (ME) -EC-75T | 200 · 200/220 | 50/60 | 0.2 | 6.5/7.5 | 0.80/1.15 | 11 (12) | 9 (10) |
| MD (ME) -EC-100T | 200 · 200/220 | 50/60 | 0.5 | 13/16 | 1.30/1.90 | 16 (16) | 15 (15) |
| MD (ME) -EC-125 | 200 · 200/220 | 50/60 | 1.0 | 24/25 (28) | 1.70/2.50 | 25 (27) | 23 (25) |
| MD (ME) -EM-100T7 | 200 · 200/220 | 50/60 | 0.75 | 16/16 (19) | 1.25/1.80 | 20 (21) | 18 (19) |
| MD (ME) -EM-125M2 | 200 · 200/220 | 50/60 | 2.2 | 33/32 (37) | 1.65/2.50 | 31 (33) | 28 (30) |
| MD (ME) -EP-63T | 200 · 200/220 | 50/60 | 0.2 | 5.0/6.0 | 0.60/0.85 | 10 (12) | 8 (10) |
| MD (ME) -EP-75T | 200 · 200/220 | 50/60 | 0.2 | 7.0/8.0 | 0.80/1.15 | 11 (13) | 9 (11) |
| MD (ME) -EP-100T | 200 · 200/220 | 50/60 | 0.5 | 13.5/14 (16) | 1.20/1.70 | 16 (17) | 14 (15) |
| MD (ME) -EP-125 | 200 · 200/220 | 50/60 | 1.0 | 23/22 (27) | 1.50/2.15 | 24 (26) | 22 (24) |
| MD (ME) -SB-75 | 200 · 200/220 | 50/60 | 0.25 | 8.0/9.5 | 0.55/0.80 | 13 (14) | 11 (12) |
| MD (ME) -SB-100 | 200 · 200/220 | 50/60 | 0.5 | 13/15 | 0.70/1.00 | 14 (15) | 12 (13) |
| MD (ME) -SB-150 | 200 · 200/220 | 50/60 | 0.75 | 21/20 (25) | 0.90/1.30 | 23 (25) | 21 (23) |
| MD (ME) -SB-600 | 200 · 200/220 | 50/60 | 0.75 | 23/20 (27) | 1.45/2.05 | 27 (29) | 26 (28) |
| MD (ME) -SB-600P | 200 · 200/220 | 50/60 | 0.75 | 25/20 (29) | 1.25/1.75 | 26 (27) | 25 (27) |
| MD (ME) -SBT-600 | 200 · 200/220 | 50/60 | 1.5 | 30/30 (36) | 1.95/2.85 | 36 (38) | 34 (36) |
| MD (ME) -SBT-600P | 200 · 200/220 | 50/60 | 1.5 | 29/30 (34) | 1.75/2.45 | 36 (38) | 34 (36) |
| MD (ME) -FS-150 | 200 · 200/220 | 50/60 | 0.2 | 7.0/8.0 | 0.39/0.55 | 9 (10) | 7 (8) |
| MD (ME) -FS-200 | 200 · 200/220 | 50/60 | 0.25 | 9.5/11 | 0.55/0.75 | 13 (14) | 11 (12) |
| MD (ME) -FS-400 | 200 · 200/220 | 50/60 | 0.5 | 15/14 (18) | 0.80/1.10 | 14 (15) | 12 (13) |
| MD (ME) -FS-750 | 200 · 200/220 | 50/60 | 0.75 | 21/19 (26) | 0.85/1.25 | 19 (21) | 18 (20) |
| MD (ME) -FS-1500 | 200 · 200/220 | 50/60 | 1.5 | 32/35 (39) | 1.10/1.60 | 30 (32) | 28 (30) |
| MD (ME) -FS-2200 | 200 · 200/220 | 50/60 | 2.2 | 45/43 (53) | 1.40/2.05 | 32 (34) | 30 (32) |
| MD (ME) -KSB-400 | 200 · 200/220 | 50/60 | 0.5 | 12/12 | 2.10/2.10 | 25 (27) | 23 (25) |
| MD (ME) -KSB-750 | 200 · 200/220 | 50/60 | 0.75 | 23/23 | 2.30/2.30 | 31 (33) | 29 (31) |
| MD (ME) -KSB-1500 | 200 · 200/220 | 50/60 | 1.5 | 35/35 | 2.75/2.75 | 40 (42) | 38 (40) |
| MD (ME) -KSB-2200 | 200 · 200/220 | 50/60 | 2.2 | 42/42 | 3.35/3.35 | 44 (46) | 42 (44) |
| MD (ME) -KSB-750B | 200 · 200/220 | 50/60 | 0.75 | 15/18 | 2.21/3.00 | 30 (31) | 29 (30) |
| MD (ME) -KSB-1500B | 200 · 200/220 | 50/60 | 1.5 | 24/28 | 2.75/3.90 | 40 (42) | 38 (40) |
| MD (ME) -KSB-2200B | 200 · 200/220 | 50/60 | 2.2 | 32/38 | 3.15/4.50 | 44 (46) | 42 (44) |
| MD (ME) -AH-400 | 200 · 200/220 | 50/60 | 0.2 | 9.5/11 | 0.75/1.05 | 13 (14) | 11 (12) |
| MD (ME) -AH-500 | 200 · 200/220 | 50/60 | 0.5 | 17/20 | 1.05/1.45 | 20 (21) | 18 (19) |
| MD (ME) -AH-600 | 200 · 200/220 | 50/60 | 0.75 | 34/32 (40) | 1.15/1.65 | 30 (32) | 28 (30) |
| MD (ME) -AH-800 | 200 · 200/220 | 50/60 | 1.0 | 40/48 | 1.30/1.85 | 34 (36) | 32 (34) |
| MD (ME) -AH-1000 | 200 · 200/220 | 50/60 | 1.5 | 56/65 | 1.35/1.90 | 47 (49) | 44 (46) |
| MD (ME) -AH-1200 | 200 · 200/220 | 50/60 | 2.2 | 73/85 | 1.65/2.35 | 55 (57) | 52 (54) |
| MD (ME) -U75-2 | 200 · 200/220 | 50/60 | 0.5 | 7.7/9.2 | 2.10/3.00 | 17 (18) | 15 (16) |
| MD (ME) -U75-3 | 200 · 200/220 | 50/60 | 0.5 | 8.3/4.5 (9.5) | 3.10/4.30 | 19 (20) | 17 (18) |
| MD (ME) -U75-4 | 200 · 200/220 | 50/60 | 1.0 | 8.5/8.0 (10) | 4.00/5.70 | 24 (25) | 22 (23) |
| MD (ME) -U75-5 | 200 · 200/220 | 50/60 | 1.0 | 8.7/6.0 (10) | 4.90/7.10 | 26 (27) | 24 (25) |
| MD (ME) -U100B-26 | 200 · 200/220 | 50/60 | 1.5 | 13.8/16.3 | 3.90/5.50 | 36 (38) | 34 (36) |
| MD (ME) -U100B-35 | 200 · 200/220 | 50/60 | 1.5 | 14 | 5.80 | 42 (44) | 40 (42) |
| MD (ME) -U100B-36 | 200 · 200/220 | 50/60 | 2.2 | 14/16.5 | 5.80/8.15 | 42 (44) | 40 (42) |
| MD (ME) -U100B-45 | 200 · 200/220 | 50/60 | 2.2 | 14.3 | 7.65 | 48 (50) | 45 (47) |
| MD (ME) -U100B-55 | 200 · 200/220 | 50/60 | 2.2 | 14.5 | 9.30 | 53 (55) | 50 (52) |

※The desired voltage can be specified when ordering. Max. air flow beyond motor capacity given in ().

MULTI STAGE-SERIES U type

ISO9001 Certification Acquisition



U75-2



U75-5



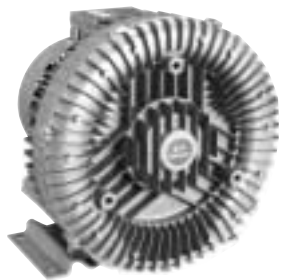
U100B-4

| Model | Casing discharge in. diam. (mm) | Discharge flange out. diam. (mm) | Intake flange out. diam. (mm) | Phase | Output (kW) | ※Current (A) | | ※50Hz 200V | | | ※60Hz 200/220V | | | Weight (kg) | Number of stages |
|----------|---------------------------------|----------------------------------|-------------------------------|-------|-------------|--------------|-----------|----------------------------------|-----------------------|---------------------------|----------------------------------|-----------------------|---------------------------|-------------|------------------|
| | | | | | | 200V | 200/220V | Revolutions (min ⁻¹) | Max.air flow (m³/min) | Max.static pressure (kPa) | Revolutions (min ⁻¹) | Max.air flow (m³/min) | Max.static pressure (kPa) | | |
| | | | | | | 50Hz | 60Hz | | | | | | | | |
| U75-2 | 75 | 75 | 123 | 3 | 0.4 | 2.5 | 2.5/2.4 | 2850 | 7.7 | 2.10 | 3450 | 9.2 | 3.00 | 15 | 2 |
| U75-3 | 75 | 75 | 123 | 3 | 0.4 | 2.5 | 2.5/2.4 | 2850 | 8.3 | 3.10 | 3450 | 6.0 (9.5) | 4.30 | 16.5 | 3 |
| U75-4 | 75 | 75 | 123 | 3 | 1.0 | 4.5 | 4.5/4.2 | 2850 | 8.5 | 4.00 | 3450 | 8.0 (10) | 5.70 | 23.5 | 4 |
| U75-5 | 75 | 75 | 123 | 3 | 1.0 | 4.5 | 4.5/4.2 | 2850 | 8.7 | 4.90 | 3450 | 6.0 (10) | 7.10 | 24 | 5 |
| U100B-26 | 100 | 100 | 148 | 3 | 1.5 | 6.2 | 6.2/5.7 | 2850 | 13.8 | 3.90 | 3450 | 16.3 | 5.50 | 34 | 2 |
| U100B-35 | 100 | 100 | 148 | 3 | 1.5 | 6.2 | — | 2850 | 14.0 | 5.80 | — | — | — | 38 | 3 |
| U100B-36 | 100 | 100 | 148 | 3 | 2.2 | 9.5 | 9.2/8.4 | 2850 | 14.0 | 5.80 | 3450 | 16.5 | 8.15 | 48 | 3 |
| U100B-45 | 100 | 100 | 148 | 3 | 2.2 | 9.5 | — | 2850 | 14.3 | 7.65 | — | — | — | 48 | 4 |
| U100B-46 | 100 | 100 | 148 | 3 | 3.7 | 15.0 | 14.5/13.5 | 2850 | 14.3 | 7.65 | 3450 | 16.7 | 11.0 | 53 | 4 |
| U100B-55 | 100 | 100 | 148 | 3 | 2.2 | 9.5 | — | 2850 | 14.5 | 9.32 | — | — | — | 59 | 5 |
| U100B-56 | 100 | 100 | 148 | 3 | 3.7 | 15.0 | 14.5/13.5 | 2850 | 14.5 | 9.32 | 3450 | 17.2 | 13.5 | 69 | 5 |

※The desired voltage can be specified when ordering. ※Current values will change according to the voltage.

Max. air flow beyond motor capacity given in ().

HIGH-PRESSUER-SERIES U2S type General purpose-type

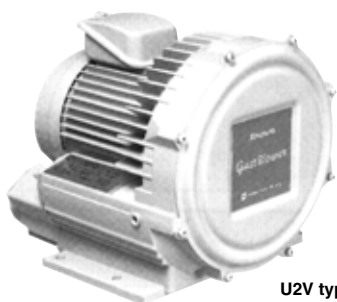


U2S type

| Model | Phase | ※ Voltage (V) | Indicated output (kW) | 50Hz | | | | 60Hz | | | | Weight (kg) |
|---------|-------|---------------|-----------------------|-------------------------------------|----------------------------|-------------------------------------|----------------------------|-------------------------------------|----------------------------|-------------------------------------|----------------------------|-------------|
| | | | | Intake | | Discharge | | Intake | | Discharge | | |
| | | | | Max. air flow (m ³ /min) | Max. static pressure (kPa) | Max. air flow (m ³ /min) | Max. static pressure (kPa) | Max. air flow (m ³ /min) | Max. static pressure (kPa) | Max. air flow (m ³ /min) | Max. static pressure (kPa) | |
| U2S-40T | 3 | 200 | 0.4 | 1.3 | 13.0 | 1.3 | 15.0 | 1.6 | 15.5 | 1.6 | 16.5 | 10 |
| U2S-70T | 3 | 200 | 0.75 | 2.4 | 14.5 | 2.4 | 12.5 | 2.9 | 14.0 | 2.9 | 13.0 | 15 |
| U2S-150 | 3 | 200 | 1.5 | 3.5 | 16.0 | 3.5 | 18.5 | 4.1 | 20.0 | 4.1 | 22.0 | 21 |
| U2S-220 | 3 | 200 | 2.2 | 5.0 | 16.0 | 5.0 | 20.0 | 6.0 | 24.0 | 6.0 | 23.0 | 35 |
| U2S-370 | 3 | 200 | 3.7 | 5.2 | 29.0 | 5.0 | 38.0 | 6.0 | 33.0 | 6.2 | 33.0 | 42 |
| U2S-750 | 3 | 200 | 7.5 | 7.8 | 22.0 | 7.3 | 27.0 | 8.8 | 24.0 | 9.2 | 27.0 | 75 |

※The desired voltage can be specified when ordering.

HIGH-PRESSUER-SERIES U2V type Low Noise-type



U2V type

| Model | Phase | ※ Voltage (V) | Indicated output (kW) | 50Hz | | | | 60Hz | | | | Weight (kg) |
|---------|-------|---------------|-----------------------|-------------------------------------|----------------------------|-------------------------------------|----------------------------|-------------------------------------|----------------------------|-------------------------------------|----------------------------|-------------|
| | | | | Intake | | Discharge | | Intake | | Discharge | | |
| | | | | Max. air flow (m ³ /min) | Max. static pressure (kPa) | Max. air flow (m ³ /min) | Max. static pressure (kPa) | Max. air flow (m ³ /min) | Max. static pressure (kPa) | Max. air flow (m ³ /min) | Max. static pressure (kPa) | |
| U2V-07S | 1 | 100 | 0.07 | 0.45 | 4.00 | 0.45 | 4.20 | 0.52 | 5.39 | 0.52 | 5.59 | 6 |
| U2V-07T | 3 | 200 | | | | | | | | | | |
| U2V-10S | 1 | 100 | 0.1 | 0.6 | 5.39 | 0.6 | 5.89 | 0.7 | 6.86 | 0.7 | 7.36 | 6.5 |
| U2V-10T | 3 | 200 | | | | | | | | | | |
| U2V-20S | 1 | 100 | 0.2 | 0.7 | 7.64 | 0.7 | 8.14 | 0.8 | 9.31 | 0.8 | 9.81 | 8.5 |
| U2V-20T | 3 | 200 | | | | | | | | | | |
| U2V-30S | 1 | 100 | 0.3 | 1.0 | 8.82 | 1.0 | 9.30 | 1.15 | 10.3 | 1.15 | 10.9 | 9 |
| U2V-30T | 3 | 200 | | | | | | | | | 10.8 | |
| U2V-40S | 1 | 100/200 | 0.4 | 1.1 | 11.8 | 1.1 | 13.9 | 1.3 | 14.7 | 1.3 | 15.7 | 17 |
| U2V-40T | 3 | 200 | | | 12.7 | | 15.7 | | 16.2 | | 17.2 | |
| U2V-70S | 1 | 100/200 | 0.75 | 1.7 | 12.7 | 1.7 | 14.7 | 2.2 | 16.7 | 2.2 | 17.5 | 23 |
| U2V-70T | 3 | 200 | | | | | | | | | | |
| U2V-150 | 3 | 200 | 1.5 | 3.3 | 16.2 | 3.3 | 19.6 | 4.0 | 21.1 | 4.0 | 22.6 | 26 |
| U2V-220 | 3 | 200 | 2.2 | 4.2 | 19.6 | 4.2 | 21.6 | 5.0 | 23.5 | 5.0 | 24.5 | 35 |

※The desired voltage can be specified when ordering.

DENCHOKU K1D/M2D/T1D/T2D/B1D type

ISO9001 Certification Acquisition



Air foil fan K1D18-R3ST



Turbo fan T1D12-R3ST

Air foil fans

| Model | Discharge in. diam. (mm) | Intake in. diam. (mm) | Output (kW) |
|-------|--------------------------|-----------------------|----------------|
| K1D08 | 240×300 | φ325 | 0.75~2.2 |
| K1D10 | 300×380 | φ400 | 2.2, 3.7 |
| K1D12 | 360×460 | φ475 | 0.75, 1.5, 5.5 |
| K1D14 | 420×540 | φ540 | 1.5~3.7 |
| K1D16 | 480×610 | φ625 | 3.7~7.5 |
| K1D18 | 540×690 | φ700 | 5.5~11 |
| K1D20 | 600×770 | φ810 | 11~18.5 |
| K1D22 | 660×850 | φ890 | 15, 18.5 |

Turbo fans

| Model | Discharge in. diam. (mm) | Intake in. diam. (mm) | Output (kW) |
|-------|--------------------------|-----------------------|-------------|
| T1D08 | 270×190 | φ265 | 1.5, 2.2 |
| T1D10 | 340×205 | φ335 | 3.7~7.5 |
| T1D12 | 400×245 | φ400 | 7.5~18.5 |
| T1D14 | 470×285 | φ475 | 15~30 |
| T2D08 | 270×190 | φ265 | 0.75, 1.5 |
| T2D10 | 340×205 | φ335 | 1.5~3.7 |
| T2D12 | 400×245 | φ400 | 3.7~11 |
| T2D14 | 470×285 | φ475 | 7.5~15, 22 |
| T2D16 | 540×325 | φ540 | 15~22 |

Turbo blowers

| Model | Discharge in. diam. (mm) | Intake in. diam. (mm) | Output (kW) |
|-------|--------------------------|-----------------------|-------------|
| B1D14 | 88×70 | JIS 5K 150A _166.6 | 2.2, 3.7 |
| B1D15 | 110×80 | JIS 5K 200A _218 | 3.7, 5.5 |
| B1D16 | 131×100 | JIS 5K 200A _218 | 5.5, 7.5 |
| B1D17 | 156×125 | JIS 5K 200A _218 | 7.5, 11 |
| B1D18 | 200×160 | JIS 5K 250A _269.5 | 11, 18.5 |
| B1D19 | 250×200 | JIS 5K 300A _321 | 18.5, 30 |
| B1D20 | 300×250 | JIS 5K 300A _321 | 30, 45 |

Sirocco fans

| Model | Discharge in. diam. (mm) | Intake in. diam. (mm) | Output (kW) |
|-------|--------------------------|-----------------------|-------------|
| M2D06 | 180×230 | φ240 | 0.75, 1.5 |
| M2D08 | 240×300 | φ325 | 0.75~5.5 |
| M2D10 | 300×380 | φ400 | 1.5~15 |
| M2D12 | 360×460 | φ475 | 3.7~11 |
| M2D14 | 420×540 | φ540 | 7.5~18.5 |

Mistrēsa



CRD type



CR type



CRH type



CRL-2200

Mistrēsa (Mist & Dust)

| Model | Phase | Output (kW) | ※Voltage (V) | Frequency (Hz) | Max.air flow (m ³ /min) | Max.static pressure (kPa) | Weight (kg) |
|-----------|-------|-------------|--------------|----------------|------------------------------------|---------------------------|-------------|
| CRD-400K | 3 | 0.4 | 200/200/220 | 50/60/60 | 4.2/5.0 | 0.75/1.10 | 30 |
| CRD-750K | 3 | 0.75 | 200/200/220 | 50/60/60 | 8.0/9.6 | 1.10/1.60 | 41 |
| CRD-1500K | 3 | 1.5 | 200/200/220 | 50/60/60 | 15/18 | 1.60/2.25 | 59 |
| CRD-2200K | 3 | 2.2 | 200/200/220 | 50/60/60 | 20/24 | 1.70/2.40 | 70 |

Mistrēsa

| Model | Phase | Output (kW) | ※Voltage (V) | Frequency (Hz) | Max.air flow (m ³ /min) | Max.static pressure (kPa) | Weight (kg) |
|----------|-------|-------------|--------------|----------------|------------------------------------|---------------------------|-------------|
| CR-400K | 3 | 0.4 | 200/200/220 | 50/60/60 | 4.2/5.0 | 0.70/1.00 | 25 |
| CR-750K | 3 | 0.75 | 200/200/220 | 50/60/60 | 8.0/9.0 | 1.00/1.40 | 35 |
| CR-1500K | 3 | 1.5 | 200/200/220 | 50/60/60 | 14/17 | 1.60/2.20 | 53 |

Hot Mistrēsa

| Model | Phase | Output (kW) | ※Voltage (V) | Frequency (Hz) | Max.air flow (m ³ /min) | Max.static pressure (kPa) | Weight (kg) |
|-------------|-------|-------------|--------------|----------------|------------------------------------|---------------------------|-------------|
| CRH-100T/E | 3 | 0.2 | 200/200/220 | 50/60/60 | 2.1/2.4 | 0.30/0.42 | 15 |
| CRH-200T/E | 3 | 0.2 | 200/200/220 | 50/60/60 | 2.7/3.2 | 0.50/0.73 | 20 |
| CRH-400T/E | 3 | 0.4 | 200/200/220 | 50/60/60 | 4.7/5.8 | 0.80/1.10 | 24 |
| CRH-750T/E | 3 | 0.75 | 200/200/220 | 50/60/60 | 8.0/9.6 | 1.00/1.40 | 34 |
| CRH-1500T/E | 3 | 1.5 | 200/200/220 | 50/60/60 | 14/17 | 1.60/2.20 | 54 |

Mistrēsa (A big wind type)

| Model | Phase | Output (kW) | ※Voltage (V) | Frequency (Hz) | Max.air flow (m ³ /min) | Rated air flow (kPa) | Weight (kg) |
|----------|-------|-------------|--------------|----------------|------------------------------------|----------------------|-------------|
| CRL-2200 | 3 | 2.2 | 200/200/220 | 50/60/60 | 30 | 1.80 | 174 |

※The desired voltage can be specified when ordering. ※Current values will change according to the voltage.

Daito Factory



Iga Factory



Daito Factory (Structure line)



Iga Factory (Structure line)

WIND BAG



WIND BAG

| Model | Phase | ※Voltage (V) | Output (kW) | ※Current (A) | Frequency (Hz) | Max. air flow (m ³ /min) | Weight (kg) |
|--------|-------|--------------|-------------|--------------|----------------|-------------------------------------|-------------|
| WB-200 | 1 | 100 | 0.2 | 2.0 | 50 | 9.0 | 9.5 |
| | | | | 3.2 | 60 | 10.5 | |

Working intake air temperature range -10°C~40°C

Working humidity Less than 80% (No dewing or dripping)

※The desired voltage can be specified when ordering. ※Current values will change according to the voltage.

Portable Fan



AP-2 type



AP-280/280T



APT-3 type

Portable Fan

| Model | Casing dia (mm) | Phase | ※Voltage (V) | Output (kW) | Frequency (Hz) | Max. air flow (m ³ /min) | Max. static pressure (kPa) | Weight (kg) | Note |
|---------|-----------------|-------|--------------|-------------|----------------|-------------------------------------|----------------------------|-------------|---------------------------------|
| AP-2 | 214 | 1 | 100 | 0.16 | 50/60 | 20/24 | 0.26/0.36 | 7 | |
| APT-3 | 314 | 3 | 200 | 0.2/0.3 | 50/60 | 36/42 | 0.40/0.53 | 25 | Pressure & Explosion Proof Type |
| AP-280 | 305 | 1 | 100 | 0.4 | 50/60 | 47/55 | 0.60/(0.80) | 13 | |
| AP-280T | 305 | 3 | 200 | 0.4 | 50/60 | 47/55 | 0.60/(0.80) | 13 | |

※The desired voltage can be specified when ordering. ※Current values will change according to the voltage. Max. air flow beyond motor capacity given in ().

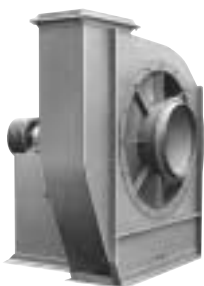
Group 4 FANS & BLOWERS

TURBO FAN

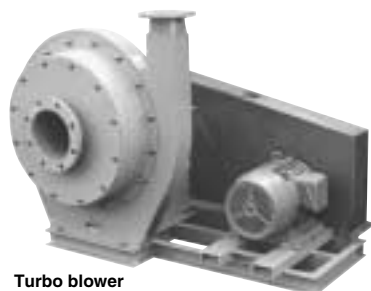
ISO9001 Certification Acquisition



Turbo fan (middle-pressure type)



Turbo fan (T1V)



Turbo blower (V-velt type)

Patent No.: US 6,190,125 B1
Date of Patent: Feb. 20, 2001
SUCTION FLOW PRESWIRL CONTROL
BPASS STRUCTURE FOR BLOWERS

Turbo fans

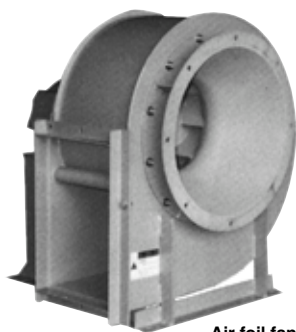
| Model | Air flow (m ³ /min) | Static pressure (kPa) | Inlet opening (φ: mm) | Outlet opening (V×H: mm) | |
|--|--------------------------------|-----------------------|-----------------------|--------------------------|----------|
| Big wind - quantity Low-pressure form | T1V08 | 20~ 60 | 0.3~2.2 | 265 | 270×190 |
| | T1V10 | 30~ 95 | 0.4~2.2 | 335 | 340×205 |
| | T1V12 | 50~ 150 | 0.5~2.8 | 400 | 400×245 |
| | T1V14 | 60~ 190 | 0.5~2.3 | 475 | 470×285 |
| | T1V16 | 90~ 280 | 0.8~3.0 | 540 | 540×325 |
| | T1V18 | 120~ 350 | 1.0~3.2 | 600 | 600×365 |
| | T1V20 | 150~ 450 | 1.0~3.2 | 660 | 670×410 |
| | T1V22 | 250~ 550 | 1.0~2.8 | 750 | 730×450 |
| | T1V24 | 300~ 650 | 1.2~3.0 | 810 | 800×490 |
| | T1V28 | 400~ 900 | 1.2~3.2 | 940 | 930×570 |
| paisy - quantity type middle-pressure form | T1V32 | 500~1100 | 1.2~2.8 | 1080 | 1070×655 |
| | T1V36 | 600~1400 | 1.2~2.8 | 1200 | 1200×735 |
| | T1V40 | 800~1800 | 1.2~2.8 | 1320 | 1330×815 |
| | T2V08 | 15~ 45 | 0.6~2.7 | 265 | 270×190 |
| | T2V10 | 30~ 75 | 0.6~3.0 | 335 | 340×205 |
| | T2V12 | 50~ 125 | 0.8~4.2 | 400 | 400×245 |
| | T2V14 | 70~ 170 | 1.0~4.2 | 475 | 470×285 |
| | T2V16 | 90~ 250 | 1.2~5.2 | 540 | 540×325 |
| | T2V18 | 130~ 330 | 1.5~6.0 | 600 | 600×365 |
| | T2V20 | 170~ 400 | 1.5~6.0 | 660 | 670×410 |
| T2V22 | 220~ 500 | 1.7~6.0 | 750 | 730×450 | |
| T2V24 | 220~ 670 | 2.5~6.3 | 810 | 800×490 | |
| T2V28 | 400~ 900 | 2.5~7.0 | 940 | 930×570 | |
| T2V32 | 450~1050 | 2.0~6.0 | 1080 | 1070×655 | |
| T2V36 | 500~1250 | 1.7~5.0 | 1200 | 1200×735 | |
| T2V40 | 600~1550 | 1.7~4.7 | 1320 | 1330×815 | |

Turbo blowers

| | | | | |
|-------|--------|----------|------------|------------|
| B2V03 | 7~ 20 | 2.5~ 6.5 | JIS5K-200A | JIS5K- 80A |
| B2V04 | 10~ 30 | 2.5~ 7.5 | JIS5K-200A | JIS5K-100A |
| B2V05 | 15~ 45 | 2.5~ 8.0 | JIS5K-200A | JIS5K-125A |
| B2V06 | 20~ 60 | 3.5~ 8.0 | JIS5K-200A | JIS5K-150A |
| B2V10 | 40~110 | 5.0~11.0 | JIS5K-300A | JIS5K-250A |
| B3V05 | 15~ 35 | 6.0~ 9.5 | JIS5K-200A | JIS5K-125A |
| B3V06 | 15~ 45 | 6.0~11.0 | JIS5K-200A | JIS5K-150A |
| B3V08 | 20~ 75 | 5.0~11.0 | JIS5K-250A | JIS5K-200A |
| B3V10 | 40~140 | 5.0~11.0 | JIS5K-300A | JIS5K-250A |

AIR FOIL FAN

ISO9001 Certification Acquisition



Air foil fan (KT type)

Air foil fans

| Model | Air flow (m ³ /min) | Static pressure (kPa) | Inlet opening (φ: mm) | Outlet opening (V×H: mm) |
|-------|--------------------------------|-----------------------|-----------------------|--------------------------|
| KT-30 | 49~ 180 | 0.49~1.96 | 480 | 480× 355 |
| KT-35 | 45~ 265 | 0.49~2.45 | 550 | 560× 400 |
| KT-40 | 85~ 357 | 0.49~2.45 | 630 | 640× 460 |
| KT-45 | 78~ 444 | 0.49~2.45 | 710 | 720× 520 |
| KT-50 | 123~ 537 | 0.49~2.45 | 795 | 800× 590 |
| KT-55 | 152~ 678 | 0.49~2.45 | 890 | 880× 670 |
| KT-60 | 144~ 775 | 0.49~2.45 | 990 | 960× 760 |
| KT-70 | 222~1125 | 0.49~2.45 | 1140 | 1120× 860 |
| KT-80 | 340~1445 | 0.49~2.45 | 1290 | 1280× 970 |
| KT-90 | 350~1700 | 0.49~2.45 | 1450 | 1440×1080 |
| KT-00 | 670~2290 | 0.49~2.45 | 1600 | 1600×1210 |

SIROCCO FAN

ISO9001 Certification Acquisition



Sirocco fan (S2 type)



Sirocco fan (D1 type)

Sirocco fans (Single suction formula) S₁·S₂

| Model | Air flow (m ³ /min) | Static pressure (kPa) | Inlet opening (φ: mm) | Outlet opening (V×H: mm) |
|-------|--------------------------------|-----------------------|-----------------------|--------------------------|
| M1V06 | 22~ 56 | 0.098~0.69 | 256 | 240× 190 |
| M1V08 | 36~ 98 | 0.098~0.79 | 340 | 320× 250 |
| M1V10 | 87~ 205 | 0.098~0.88 | 430 | 400× 320 |
| M1V12 | 113~ 299 | 0.098~0.79 | 514 | 480× 385 |
| M1V14 | 134~ 378 | 0.098~0.88 | 570 | 530× 420 |
| M1V16 | 174~ 503 | 0.098~0.88 | 646 | 610× 480 |
| M1V18 | 217~ 613 | 0.098~0.69 | 722 | 680× 550 |
| M1V20 | 219~ 711 | 0.15 ~0.79 | 808 | 760× 610 |
| M1V22 | 305~ 900 | 0.15 ~0.88 | 892 | 840× 670 |
| M1V24 | 385~1100 | 0.15 ~0.88 | 970 | 910× 730 |
| M1V28 | 555~1450 | 0.15 ~0.88 | 1140 | 1060× 850 |
| M1V32 | 620~1780 | 0.15 ~0.88 | 1320 | 1250×1000 |
| M1V36 | 1050~2460 | 0.15 ~0.88 | 1500 | 1400×1120 |
| M1V40 | 1300~3150 | 0.15 ~0.88 | 1700 | 1600×1250 |

Sirocco fans (Multi suction formula) D₁

| Model | Air flow (m ³ /min) | Static pressure (kPa) | Inlet opening (φ: mm) | Outlet opening (V×H: mm) |
|-------|--------------------------------|-----------------------|-----------------------|--------------------------|
| M1V06 | 41.8~ 114 | 0.098~0.69 | 256 | 240× 340 |
| M1V08 | 69~ 197 | 0.098~0.79 | 340 | 320× 425 |
| M1V10 | 137~ 380 | 0.098~0.88 | 430 | 400× 560 |
| M1V12 | 215~ 615 | 0.098~0.79 | 514 | 480× 650 |
| M1V14 | 224~ 640 | 0.098~0.88 | 570 | 530× 750 |
| M1V16 | 340~1015 | 0.098~0.88 | 646 | 610× 880 |
| M1V18 | 370~1240 | 0.098~0.88 | 722 | 680× 990 |
| M1V20 | 485~1395 | 0.15 ~0.79 | 808 | 760×1110 |
| M1V22 | 650~1535 | 0.15 ~0.79 | 892 | 840×1170 |
| M1V24 | 625~1665 | 0.15 ~0.79 | 970 | 910×1300 |
| M1V28 | 955~2435 | 0.15 ~0.88 | 1140 | 1060×1500 |

PLATE FAN

ISO9001 Certification Acquisition



Plate fans (Low Pressure type)



Plate fans (Middle Pressure type)

Plate fans (Low Pressure type)

| Model | Air flow (m ³ /min) | Static pressure (kPa) | Inlet opening (φ: mm) | Outlet opening (V×H: mm) |
|-------|--------------------------------|-----------------------|-----------------------|--------------------------|
| P1V08 | 15~ 65 | 0.2~1.8 | 240 | □200 |
| P1V10 | 20~100 | 0.2~1.6 | 300 | □250 |
| P1V12 | 30~140 | 0.4~2.0 | 360 | □300 |
| P1V14 | 50~200 | 0.4~1.7 | 420 | □350 |
| P1V16 | 70~300 | 0.6~2.5 | 475 | □400 |
| P1V18 | 100~370 | 0.6~2.2 | 600 | 600×365 |
| P1V20 | 140~480 | 0.6~2.5 | 660 | 670×410 |
| P1V22 | 150~540 | 0.6~2.4 | 750 | 730×450 |
| P1V24 | 170~700 | 0.6~2.5 | 810 | 800×490 |
| P1V28 | 170~980 | 0.6~2.7 | 940 | 930×570 |

Plate fans (Middle Pressure type)

| Model | Air flow (m ³ /min) | Static pressure (kPa) | Inlet opening (φ: mm) | Outlet opening (V×H: mm) |
|-------|--------------------------------|-----------------------|-----------------------|--------------------------|
| GP-20 | 24~ 57 | 1.47~3.68 | 212 | 224×140 |
| GP-25 | 36~ 77 | 1.72~4.41 | 236 | 250×160 |
| GP-30 | 44~101 | 1.96~4.91 | 265 | 280×180 |
| GP-35 | 68~124 | 2.21~4.91 | 300 | 315×200 |
| GP-40 | 76~168 | 2.45~5.40 | 335 | 355×224 |
| GP-45 | 100~209 | 2.94~5.40 | 375 | 400×250 |
| GP-50 | 132~265 | 3.19~5.64 | 425 | 450×280 |
| GP-55 | 196~344 | 3.19~5.89 | 475 | 500×315 |
| GP-60 | 240~412 | 3.19~5.64 | 530 | 560×355 |
| GP-70 | 300~512 | 3.19~5.64 | 600 | 630×400 |

AXIAL FLOW FAN

ISO9001 Certification Acquisition



AV type



A type

MIXED FLOW FAN

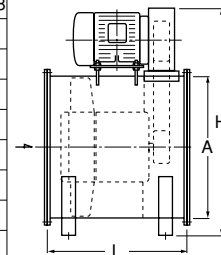
ISO9001 Certification Acquisition



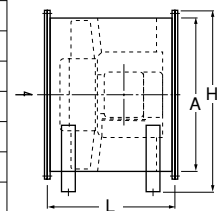
MFTV type

Axial flow fans

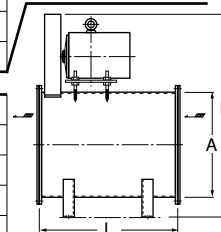
| Model | Casing dia (A: mm) | Casing length (L: mm) | Height (H: mm) | Air flow (m ³ /min) | Static pressure (kPa) |
|----------|--------------------|-----------------------|----------------|--------------------------------|-----------------------|
| AV-3K | 300 | 450 | (560) | 32~47 | 0.049~0.098 |
| AV-4K | 400 | 530 | (720) | 73~119 | 0.049~0.29 |
| AV-5K | 500 | 560 | (850) | 112~196 | 0.049~0.39 |
| AV-6K | 600 | 600 | (970) | 175~330 | 0.049~0.59 |
| AV-7K | 700 | 710 | (1250) | 277~488 | 0.098~0.59 |
| AV-8K | 800 | 750 | (1350) | 355~685 | 0.098~0.69 |
| AV-9K | 900 | 900 | (1510) | 420~920 | 0.098~0.79 |
| AV-10K | 1000 | 1000 | (1640) | 605~1120 | 0.098~0.79 |
| AV-11K | 1100 | 1180 | (1750) | 725~1365 | 0.049~0.79 |
| AV-12.5K | 1250 | 1320 | (1990) | 840~1800 | 0.049~0.88 |
| AV-14K | 1400 | 1500 | (2160) | 1160~2250 | 0.049~0.79 |



| Model | Casing dia (A: mm) | Casing length (L: mm) | Height (H: mm) | Air flow (m ³ /min) | Static pressure (kPa) |
|---------|--------------------|-----------------------|----------------|--------------------------------|-----------------------|
| A-3K | 300 | 355 | 377 | 35~51.5 | 0.049~0.098 |
| A-4K | 400 | 375 | 484 | 57~72 | 0.049~0.098 |
| A-5K | 500 | 475 | 605 | 117~149 | 0.049~0.20 |
| A-6K | 600 | 530 | 695 | 180~254 | 0.049~0.29 |
| A-7K | 700 | 600 | 847 | 285~428 | 0.20~0.59 |
| A-8K | 800 | 800 | 953 | 445~645 | 0.20~0.79 |
| A-9K | 900 | 800 | 1063 | 395~590 | 0.098~0.39 |
| A-10K | 1000 | 850 | 1183 | 515~830 | 0.20~0.49 |
| A-11K | 1100 | 950 | 1309.5 | 700~1165 | 0.20~0.69 |
| A-12.5K | 1250 | 1060 | 1474.5 | 1090~1960 | 0.20~0.88 |
| A-14K | 1400 | 1120 | 1659.5 | 1220~1800 | 0.20~0.59 |



| Model | Casing dia (A: mm) | Casing length (L: mm) | Height (H: mm) | Air flow (m ³ /min) | Static pressure (kPa) |
|-------|--------------------|-----------------------|----------------|--------------------------------|-----------------------|
| ACT-5 | 500 | 530 | 520 | 61~130 | 0.049~0.29 |
| ACT-6 | 600 | 600 | 630 | 86~203 | 0.049~0.39 |
| ACT-7 | 700 | 670 | 740 | 60~258 | 0.098~0.49 |
| ACT-8 | 800 | 770 | 850 | 133~373 | 0.20~0.59 |



Mixed flow fans

| Model | Casing dia (A: mm) | Casing length (L: mm) | Height (H: mm) | Air flow (m ³ /min) | Static pressure (kPa) |
|--------|--------------------|-----------------------|----------------|--------------------------------|-----------------------|
| MFTV-4 | 400 | 550 | (790) | 9.5~75.5 | 0.098~1.18 |
| MFTV-5 | 500 | 620 | (940) | 13~127 | 0.098~1.37 |
| MFTV-6 | 600 | 765 | (1060) | 10~198 | 0.29~1.96 |
| MFTV-7 | 700 | 910 | (1210) | 16~308 | 0.29~1.96 |
| MFTV-8 | 800 | 1000 | (1315) | 22~392 | 0.29~1.96 |

Group 5 / DUST COLLECTOR



CFA-110



CFA-215C/T
CFA-220



CFA-240



CFM形



CFA-360



CFO-2200

Dust collector

| Model | Out put (kW) | Air flow (m ³ /min) | Static pressure (kPa) | filter surface area (m ²) | Approx Weight (kg) | Main part size W×L×H (mm) | Shaking method |
|------------|--------------|--------------------------------|-----------------------|---------------------------------------|--------------------|---------------------------|----------------------|
| CFA-110 | 0.2 | 4.0 | ※0.8/1.18 | 0.8 | 25 | 405× 380× 570 | Nothing |
| CFA-215C/T | 0.4 | 6.0 | 1.96 | 1.5 | ※47/44 | 452× 492× 744 | Manual |
| CFA-220 | 0.75 | 10 | 2.26 | 2 | 55 | 452× 492× 744 | |
| CFA-240 | 1.5 | 20 | 2.55 | 4 | 135 | 681× 636×1228 | |
| CFA-360 | 1.5 | 20 | 2.10 | 6 | 200 | 750× 750×1800 | Nothing |
| CFO-2200 | 2.2 | ※28/35 | ※1.08/1.57 | 4 | 90 | 630× 987×2600 | |
| CFC-10 | 1.5 | 15 | ※1.95/2.2 | 8 | 195 | 1060× 600×2155 | |
| CFC-20 | 2.2 | 20 | ※1.95/2.2 | 8 | 200 | 1060× 600×2155 | |
| CFC-30 | 3.7 | 34 | ※1.95/2.35 | 16 | 280 | 1610× 715×2590 | |
| CFM-10N | 1.5 | 20 | 2.45 | 10.8 | 165 | 700× 695×1800 | Micro-computer pulse |
| CFM-20N | 2.2 | 30 | 2.45 | 16.2 | 210 | 700× 895×1800 | |
| CFM-30N | 3.7 | 40 | 2.45 | 21.6 | 260 | 900× 895×1850 | |
| CFM-40N | 5.5 | 60 | 2.45 | 32.4 | 450 | 1300× 985×1980 | Manual |
| CFE-20N | 2.2 | 30 | 2.45 | 10 | 220 | 896× 751×2275 | |
| CFE-30N | 3.7 | 40 | 2.45 | 12.5 | 270 | 896× 916×2275 | |
| CFE-40N | 5.5 | 60 | 2.45 | 21 | 390 | 1220×1075×2415 | |

※ 50Hz/60Hz



Daito Factory & Headquarters

1-25 Shinden Kitamachi, Daito-city, Osaka, Japan 574-0052
Tel : +81(72)871-1061



Iga Factory & Showa Fuyoku Kikai Co., Ltd.

5030 Baba, Shimotsuge, Iga-cho, Ayama-gun, Mie,
Japan 519-1412
Tel : +81(595)45-2721



**ISO 9001
JQA-3166**

THAILAND :



MULTITECH AUTOMATION AND ELECTRIC CO.,LTD
143/38 Moo.7 Bangchalong Bangplee Samutprakarn
Tel : +662 740 7612 (Auto) Fax : +662 740 7911
www.multi-tech.co.th sales@multi-tech.co.th



SHOWA DENKI CO., LTD.

Business Promotion Dept.

1-25 Shinden Kita-machi, Daito-city, Osaka,
Japan 574-0052